

# A Night in Tunisia

Dizzy Gillespie  
arr. Randy Martono-Chai

Med. Afro

Musical score for the first system of 'A Night in Tunisia'. It includes staves for Alto Saxophone 1, Alto Saxophone 2, Tenor Saxophone 1, Tenor Saxophone 2, Baritone Saxophone, Keys, Bass, and Drum Set. The tempo is marked 'Med. Afro'. The key signature has one flat (Bb). The time signature is common time (C). The saxophones have rests for the first three measures and enter in the fourth measure with eighth notes. The Keys and Bass parts provide harmonic support with chords Eb7, D-6, Eb7, and D-6. The Drum Set part features a steady Afro-Cuban rhythm with a double bar line and a '2' above it in the fourth measure.

Musical score for the second system of 'A Night in Tunisia', starting at measure 5. It includes staves for A. Sax. 1, A. Sax. 2, T. Sax. 1, T. Sax. 2, B. Sax., Kys., Bs., and Dr. The saxophones play a melodic line with triplets and eighth notes. The Keys and Bass parts provide harmonic support with chords Eb7 and D-7. The Drum Set part features a steady Afro-Cuban rhythm with a double bar line and a '2' above it in the second, fourth, and sixth measures.

2



11

1. 2. B

A. Sax. 1

A. Sax. 2

T. Sax. 1

T. Sax. 2

B. Sax.

E-7(b5) A7Alt D-6 D-(Maj7) A-7(b5) D7(b9)

Kys.

E-7(b5) A7Alt D-6 D-(Maj7) A-7(b5) D7(b9)

Bs.

Dr.



D.S. al Coda

16

A. Sax. 1

A. Sax. 2

T. Sax. 1

T. Sax. 2

B. Sax.

G-6 C7 G-7(b5) C7(b9) FMaj7 E-7(b5) A7Alt

Kys.

G-6 C7 G-7(b5) C7(b9) FMaj7 E-7(b5) A7Alt

Bs.

Dr.

2 2 2

Interlude

A. Sax. 1

A. Sax. 2

T. Sax. 1

T. Sax. 2

B. Sax.

D-7 E-7(b5) Eb7(#11)

Kys.

D-7 E-7(b5) Eb7(#11)

Bs.

Dr. 2

A. Sax. 1

A. Sax. 2

T. Sax. 1

T. Sax. 2

B. Sax.

D-7 G7(#11) G-(Maj7) G-7

Kys.

D-7 G7(#11) G-(Maj7) G-7

Bs.

Dr. 2 2 2

(A. Sax 1 solo break)

DMaj7 C#-7(b5) F#7(b9)

A. Sax. 1

A. Sax. 2

T. Sax. 1

T. Sax. 2

B. Sax.

Gb7Alt

Kys.

Gb7Alt

Bs.

Dr.



Open Solo - Drum solo last

C7 B-7 C7 B-7 C7 B-7

A. Sax. 1

A. Sax. 2

T. Sax. 1

T. Sax. 2

B. Sax.

Eb7 D-7 Eb7 D-7 Eb7 D-7

Kys.

Eb7 D-7 Eb7 D-7 Eb7 D-7

Bs.

Dr.

2 2



E-7                      A7       E-7(b5)       A7(b9)                      DMaj7       C#-7(b5) F#7Alt                      G.P.

A. Sax. 1

E-7                      A7       E-7(b5)       A7(b9)                      DMaj7       C#-7(b5) F#7Alt

A. Sax. 2

A-7                      D7       A-7(b5)       D7(b9)                      GMaj7       F#-7(b5) B7Alt

T. Sax. 1

A-7                      D7       A-7(b5)       D7(b9)                      GMaj7       F#-7(b5) B7Alt

T. Sax. 2

E-7                      A7       E-7(b5)       A7(b9)                      DMaj7       C#-7(b5) F#7Alt

B. Sax.

G-7                      C7       G-7(b5)       C7(b9)                      FMaj7       E-7(b5) A7Alt

Kys.

G-7                      C7       G-7(b5)       C7(b9)                      FMaj7       E-7(b5) A7Alt

Bs.

Dr. **2** // **2** // **2** //



A. Sax. 1

A. Sax. 2

T. Sax. 1

T. Sax. 2

B. Sax.

Eb7                      D-6                      Eb7                      D-6

Kys.

Eb7                      D-6                      Eb7                      **2** D-6

Bs.

Dr. **2** //

(Pno. solo, gradually getting softer)

(A. Sax 1 solo)

x7

G.P.

D-(Maj7) 7

A. Sax. 1

A. Sax. 2

T. Sax. 1

T. Sax. 2

B. Sax.

Kys.

Bs.

Dr.

E $\flat$ 7(#11) D-6 E $\flat$ 7(#11) D-6

E $\flat$ 7(#11) 2 D-6 E $\flat$ 7(#11) D-6

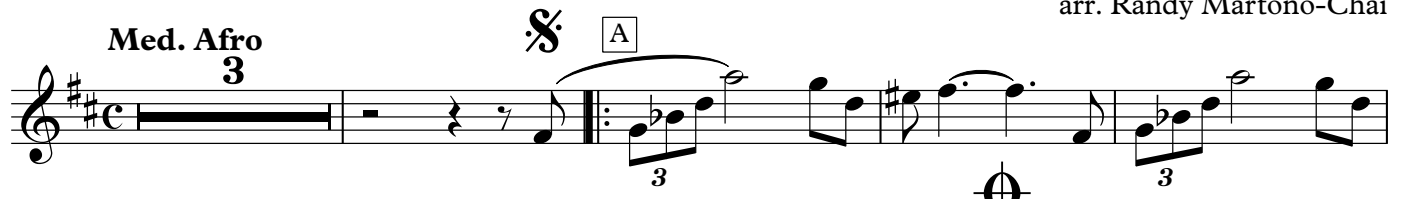
2

# Alto Saxophone 1

Dizzy Gillespie  
arr. Randy Martono-Chai

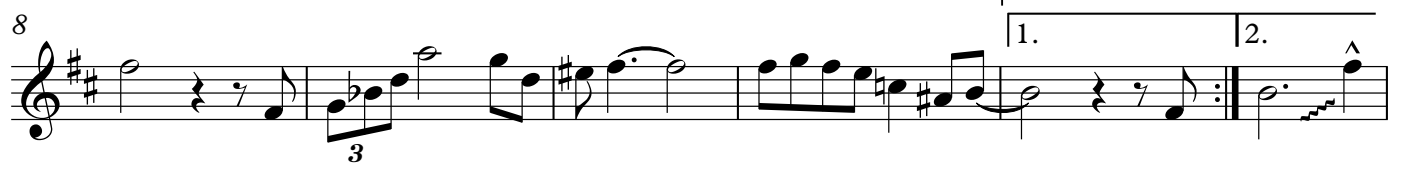
**Med. Afro**  
3

A



8

1. | 2.



14

B



19

**D.S. al Coda**



Interlude



(A. Sax 1 solo break)

DMaj7 C#-7(b5)




**Open Solo - Drum solo last**

F#7(b9) C7 B-7 C7 B-7 C7



B-7 C#-7(b5) F#7Alt B-7 C7 B-7 C7





## Alto Saxophone 1

B-7 C7 B-7 C#-7(b5) F#7Alt B-7 F#-7(b5)

B7(b9) E-7 A7 E-7(b5) A7(b9)

DMaj7 C#-7(b5) F#7Alt G.P. 3

(Pno. solo, gradually getting softer) x7 (A. Sax 1 solo) G.P. D-(Maj7)

Alto Saxophone 2

Dizzy Gillespie  
arr. Randy Martono-Chai

Med. Afro  
3

A

8

1.

13

2.

B

18

D.S. al Coda

Interlude

(a. sax solo break)

4

Alto Saxophone 2

**Open Solo - Drum solo last**

C7 B-7 C7 B-7 C7 B-7

C#-7(b5) F#7Alt B-7 C7 B-7 C7 B-7

C7 B-7 C#-7(b5) F#7Alt B-7 F#-7(b5) B7(b9)

E-7 A7 E-7(b5) A7(b9) DMaj7 C#-7(b5) F#7Alt

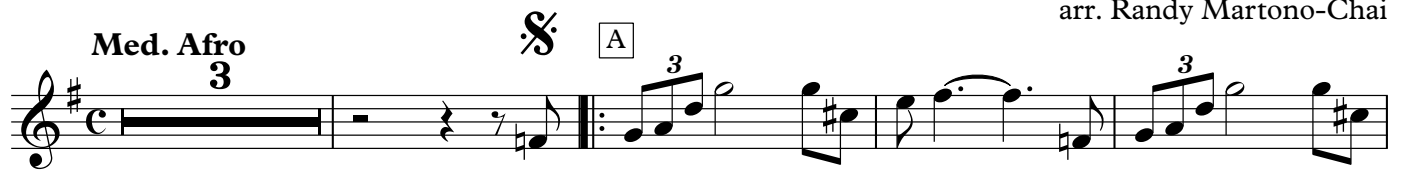
G.P. 3 (Pno. solo, gradually getting softer) x7

(A. Sax 1 solo) G.P.

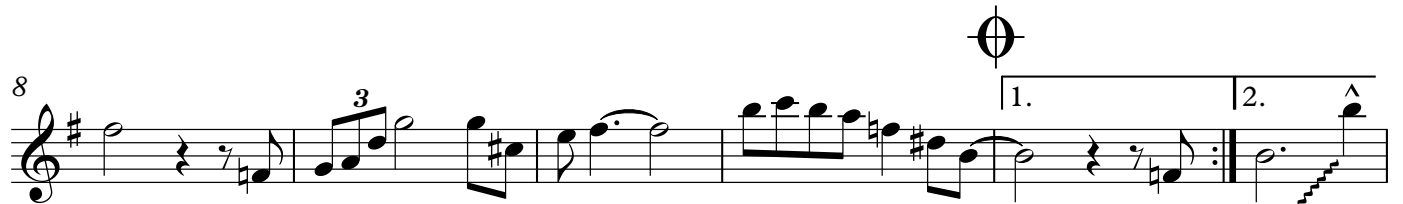
# Tenor Saxophone 1

Dizzy Gillespie  
arr. Randy Martono-Chai

**Med. Afro**  $\text{3}$   $\text{A}$



8  $\text{1.}$   $\text{2.}$



14  $\text{B}$



19 **D.S. al Coda**



**Interlude**



(a. sax solo break)  $\text{4}$



## Tenor Saxophone 1

## Open Solo - Drum solo last

C

F7 E-7 F7 E-7 F7 E-7

F#-7(b5)B7Alt E-7 F7 E-7 F7 E-7

F7 E-7 F#-7(b5)B7Alt E-7 B-7(b5) E7(b9)

A-7 D7 A-7(b5) D7(b9) GMaj7 F#-7(b5)B7Alt

G.P. 3 (Pno. solo, gradually getting softer) x7

(A. Sax 1 solo) G.P.

Tenor Saxophone 2

Dizzy Gillespie  
arr. Randy Martono-Chai

Med. Afro **3**

**A**

**1.**

**2.** **B**

**18** **D.S. al Coda**

**Interlude**

*(a. sax solo break)*

**4**

## Tenor Saxophone 2

**Open Solo - Drum solo last**

C

F7 E-7 F7 E-7 F7 E-7

F#-7(b5) B7Alt E-7 F7 E-7 F7 E-7

F7 E-7 F#-7(b5) B7Alt E-7 B-7(b5) E7(b9)

A-7 D7 A-7(b5) D7(b9) GMaj7 F#-7(b5) B7Alt

*(Pno. solo, gradually getting softer)*

G.P.

3

x7

*(A. Sax 1 solo)*

G.P.

Baritone Saxophone

Dizzy Gillespie  
arr. Randy Martono-Chai

**Med. Afro**  
**3**

**A**

8

1. 2.

14 **B**

**B**

19 **D.S. al Coda**

**D.S. al Coda**

**Interlude**

**Interlude**

27 28 29 30

(a. sax solo break)

**4**

**4**



## Baritone Saxophone

**Open Solo - Drum solo last**

C

C7

B-7

C7

B-7

C7

B-7



C#-7(b5) F#7Alt

B-7

C7

B-7

C7

B-7



C7

B-7

C#-7(b5) F#7Alt

B-7

F#-7(b5)

B7(b9)



E-7

A7

E-7(b5)

A7(b9)

DMaj7

C#-7(b5) F#7Alt

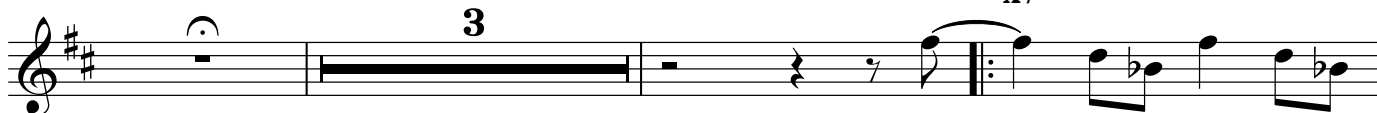


G.P.

3

*(Pno. solo, gradually getting softer)*

x7

*(A. Sax 1 solo)*

G.P.



Keys

# A Night in Tunisia

Dizzy Gillespie  
arr. Randy Martono-Chai

**E $\flat$ 7 Med. Afro**      D-6      E $\flat$ 7      D-6      **§**

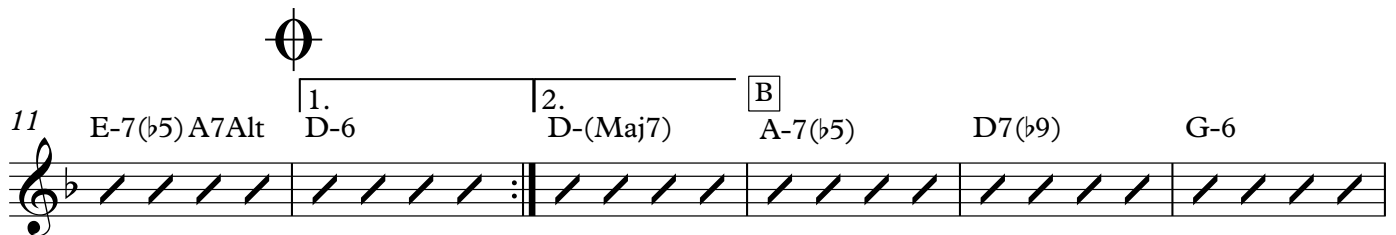


**A**  
5      E $\flat$ 7      D-7      E $\flat$ 7      D-7      E $\flat$ 7      D-7



**⊕**

11      E-7(b5) A7Alt      1. D-6      2. D-(Maj7)      **B** A-7(b5)      D7(b9)      G-6



**D.S. al Coda**

17      C7      G-7(b5)      C7(b9)      FMaj7      E-7(b5) A7Alt      D-7



**Interlude**  
E-7(b5)      E $\flat$ 7(#11)      D-7



G7(#11)      G-(Maj7)      G-7



G $\flat$ 7Alt      (a. sax solo break) **4**



**Open Solo - Drum solo last**

C

Eb7

D-7

Eb7

D-7

Eb7

D-7



E-7(b5) A7Alt

D-7

Eb7

D-7

Eb7

D-7



Eb7

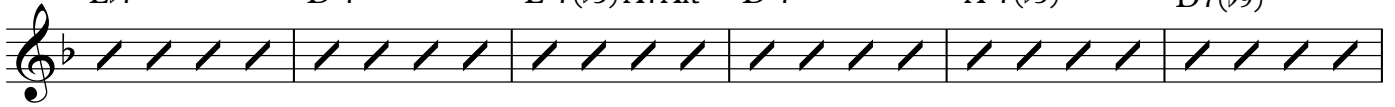
D-7

E-7(b5) A7Alt

D-7

A-7(b5)

D7(b9)



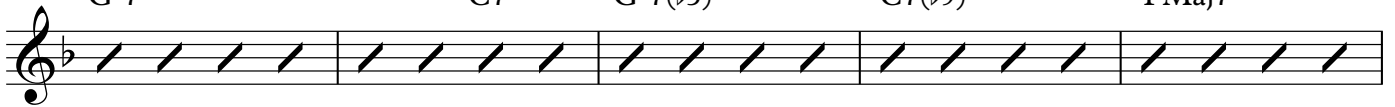
G-7

C7

G-7(b5)

C7(b9)

FMaj7



E-7(b5) A7Alt

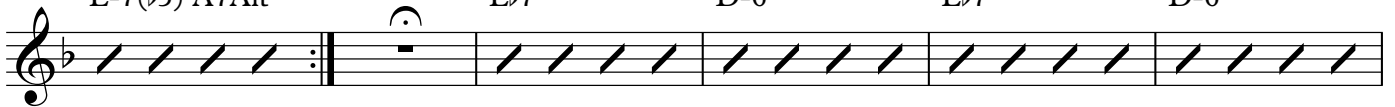
G.P.

Eb7

D-6

Eb7

D-6

*(Pno. solo, gradually getting softer)*

x7

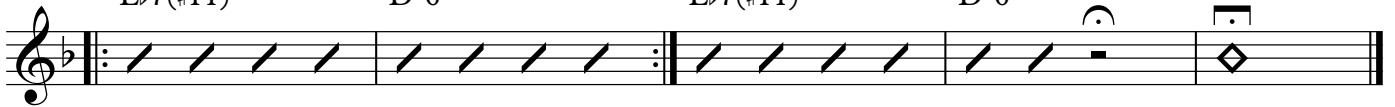
Eb7(#11)

D-6

Eb7(#11)

D-6

G.P.

*(A. Sax 1 solo)*

Bass

# A Night in Tunisia

Dizzy Gillespie  
arr. Randy Martono-Chai

**Med. Afro**  
Eb7 D-6 Eb7 D-6

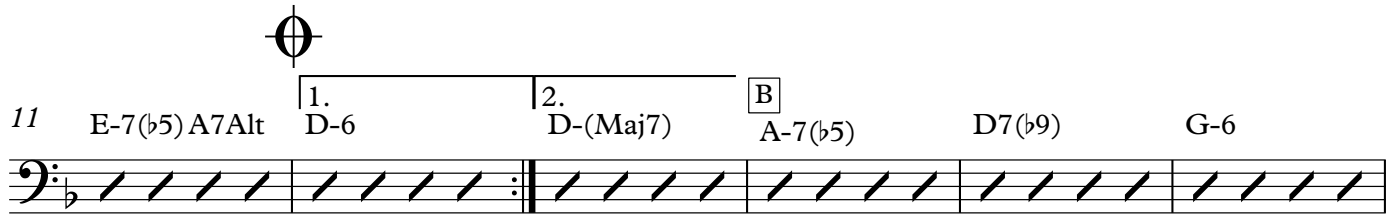


2

**A**  
5 Eb7 D-7 Eb7 D-7 Eb7 D-7



11 E-7(b5) A7Alt 1. D-6 2. D-(Maj7) **B** A-7(b5) D7(b9) G-6



17 C7 G-7(b5) C7(b9) FMaj7 **D.S. al Coda** E-7(b5) A7Alt D-7



**Interlude**  
E-7(b5) Eb7(#11) D-7



G7(#11) G-(Maj7) G-7

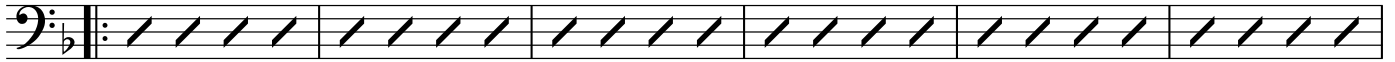


Gb7Alt (a. sax solo break) 4



**C** Open Solo - Drum solo last

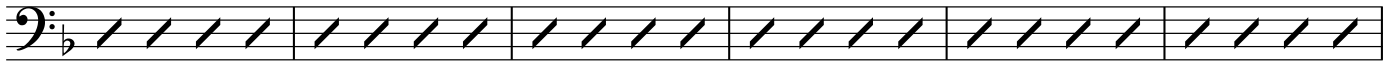
E $\flat$ 7 D-7 E $\flat$ 7 D-7 E $\flat$ 7 D-7



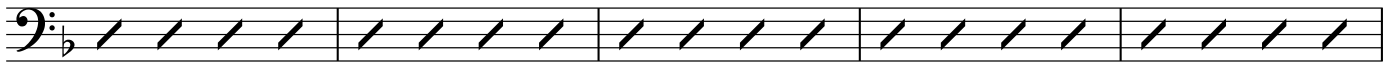
E-7(b5) A7Alt D-7 E $\flat$ 7 D-7 E $\flat$ 7 D-7



E $\flat$ 7 D-7 E-7(b5) A7Alt D-7 A-7(b5) D7(b9)



G-7 C7 G-7(b5) C7(b9) FMaj7



E-7(b5) A7Alt *G.P.* E $\flat$ 7 D-6 E $\flat$ 7 D-6



*(Pno. solo, gradually getting softer)*

*x7* E $\flat$ 7(#11) D-6 E $\flat$ 7(#11) D-6 *G.P.* (A. Sax 1 solo)




# A Night in Tunisia

Drum Set

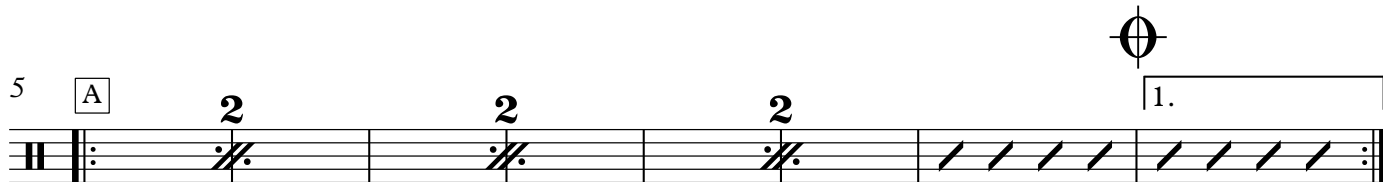
Dizzy Gillespie  
arr. Randy Martono-Chai

Med. Afro

2 **S**



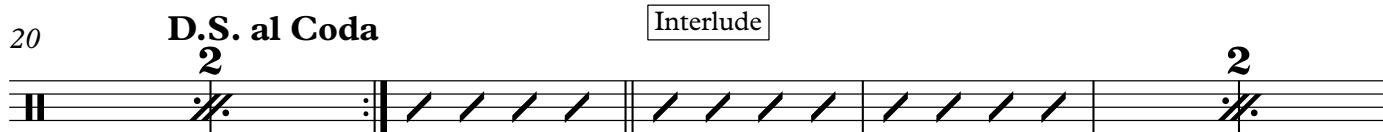
5 **A** 2 2 2 1.



13 2. **B** 2 2



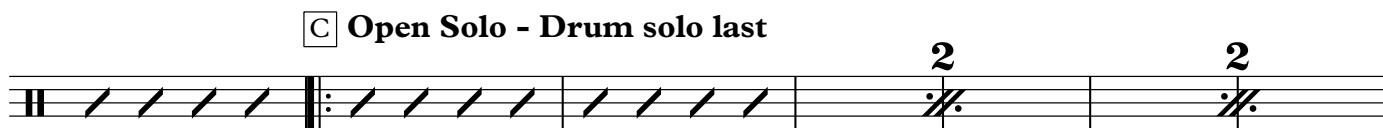
20 **D.S. al Coda** Interlude 2



(a. sax solo break) 2 2 2 2 3



**C** Open Solo - Drum solo last 2 2



2 2 2 2 2



2 2 2



2



Drum Set

*G.P.*



*(Pno. solo, gradually getting softer)*

*(A. Sax 1 solo)*

